

FUJIMITE<sup>®</sup> SC Miticide/Insecticide provides fast knockdown of citrus thrips with activity against both adults and nymphs. In addition, FUJIMITE SC provides excellent control of mites, citricola scale, mealybugs, ACP, and suppression of citrus leafminers.

### Key Benefits

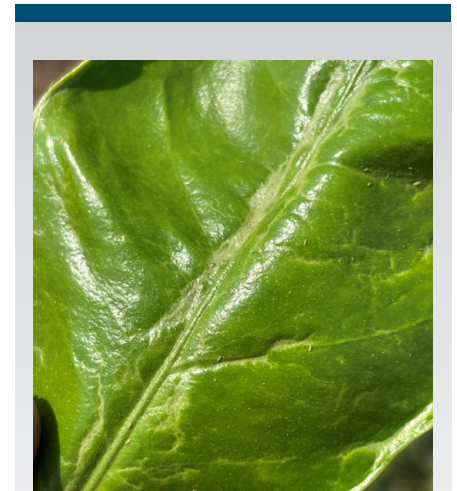
- Provides knockdown activity on citrus thrips adults and nymphs
- Broad spectrum activity on key citrus pests
- No bloom restrictions
- Provides an alternative mode of action for thrips control (IRAC Group 21A)
- Low odor, no respirator required

### Use Information

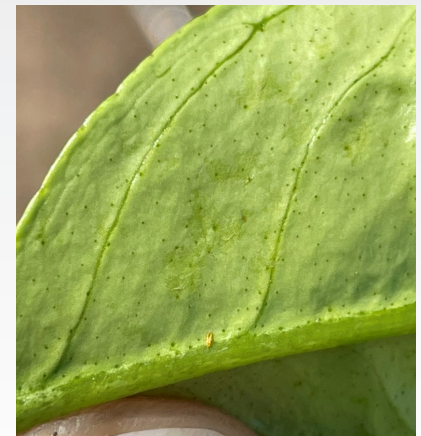
- Application Rate: 2 pt/A, ground application
- Recommended timing: Prebloom or bloom
- Water Volume: 100 to 200 GPA
- FUJIMITE SC is a contact miticide/insecticide. Proper application and coverage are critical for maximizing pest control.
  - Adjuvant: 415 Oil at 1% v/v preferred
  - Tractor Speed: For best results, do not exceed 2 MPH

### Product Information

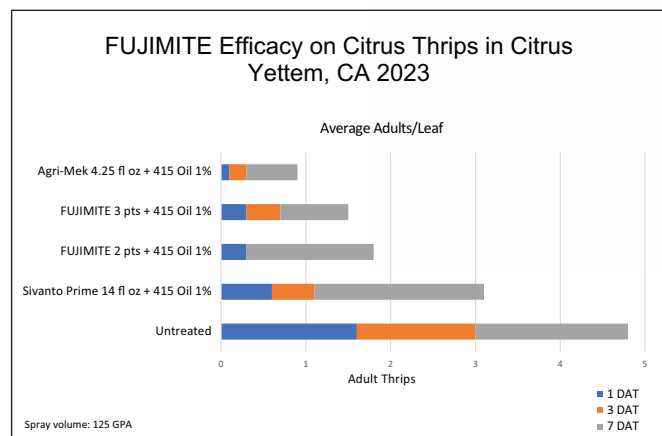
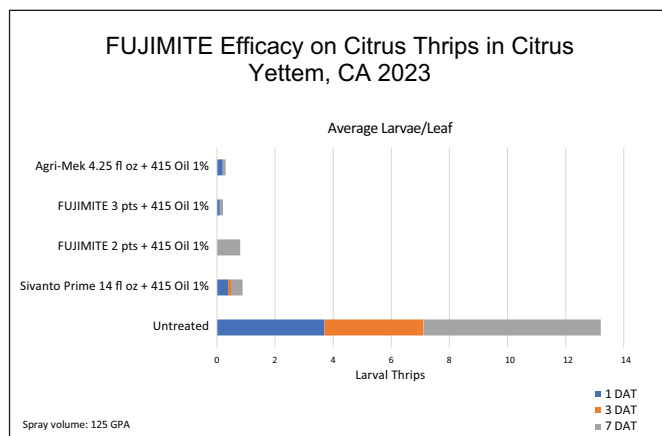
- FUJIMITE SC provides contact knockdown activity only. Thrips mortality should be checked 1 to 3 days after treatment.
- Group 21A Insecticide—Rotate with a different mode of action
- Preharvest Interval (PHI): 3 days
- Reentry Interval (REI): 12 hours



Untreated



FUJIMITE 1 DAT



A single application of FUJIMITE at 2 pt/A or 3 pt/A at bloom provides quick knockdown of thrips larvae and adults.

