

Unique Mode of Action for Powdery Mildew Control

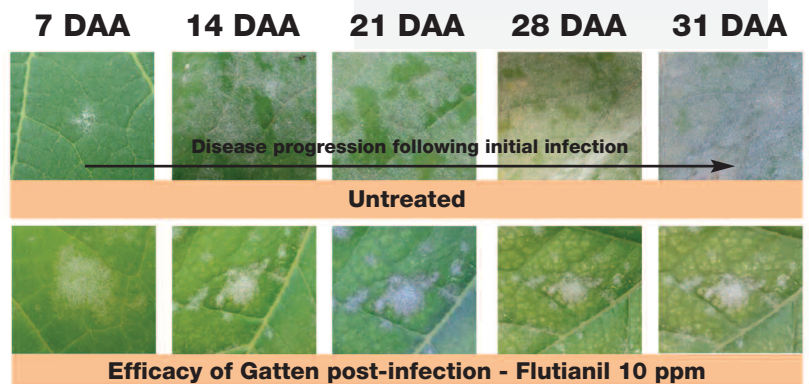
Gatten[®] CA fungicide delivers powerful, cost effective powdery mildew control in grapes. The active ingredient in Gatten CA, *flutianil*, inhibits the powdery mildew pathogen from absorbing nutrients from the host plant, making it impossible for the pathogen to grow and expand. With its unique mode of action, Gatten CA is an excellent rotational option for resistance management programs in grapes.

Key Benefits

- Unique mode of action for powdery mildew control – FRAC Group U13
- No cross resistance with existing fungicides
- Translaminar movement – provides protection to both sides of the leaf
- Inhibits formation of haustorium, the structure that allows the fungus to extract nutrients from the plant cell
- Inhibits formation of the secondary hyphae and limits the development and dispersion of viable spores, helping to break the disease life cycle
- Demonstrates a high level of efficacy similar to or better than that of current fungicides
- Excellent rotational partner for powdery mildew resistance management programs in grapes

Use Information

- Application Method: Airblast ground
- Minimum Water Volume: 20 gallons per acre
- Application Rate: 6.4 fl oz per acre
- Maximum Application: 1 application per year
- Reentry Interval (REI): 12 hours
- Preharvest Interval (PHI): 14 days



This diagram illustrates the efficacy of Gatten CA applied after infection. Gatten CA stops the expansion of an existing infection.

Refer to the global MRL database for current established tolerances www.globalmrl.com/db#query