



# Unique Mode of Action for Powdery Mildew Control

MELON / CUCUMBER / SQUASH

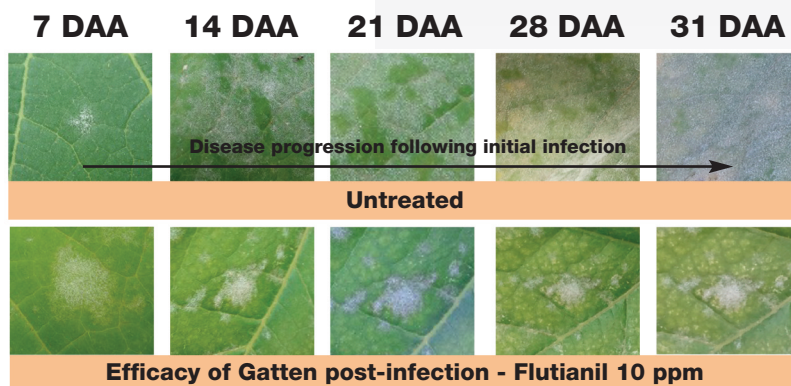
Gatten® fungicide delivers powerful, cost effective powdery mildew control. The active ingredient in Gatten, flutianil, inhibits the powdery mildew pathogen from absorbing nutrients from the host plant, making it impossible for the pathogen to grow and expand. With its unique mode of action, Gatten is an excellent rotational tool for resistance management programs.

## Key Benefits

- Unique mode of action for powdery mildew control – FRAC Group U13
- No cross resistance with existing fungicides
- Translaminar movement – provides protection to both sides of the leaf
- Inhibits formation of haustorium, the structure that allows the fungus to extract nutrients from the plant cell
- Inhibits formation of the secondary hyphae and limits the development and dispersion of viable spores, helping to break the disease life cycle
- Demonstrates a high level of efficacy similar to or better compared to current standard fungicides
- Excellent rotational partner for powdery mildew resistance management programs

## Use Information

- Application Method: Ground only
- Minimum Water Volume: 30 gallons per acre; use adequate spray volume to obtain thorough coverage
- Application Rate: 6.0 to 8.0 fl oz per acre; use high quality spreader
- Application Timing: Onset of vegetative growth through harvest
- Maximum Applications: 5 per growing season; 2 growing seasons per year
- Maximum AI Per Year: 0.20 lb ai/A (NY – 0.0528 lb ai/A)
- Minimum Retreatment Interval: 7 days
- Plantback Restrictions: None
- Resistance Management: Do not make more than 2 consecutive applications.
- Reentry Interval (REI): 12 hours
- Preharvest Interval (PHI): 0 days



This diagram illustrates the efficacy of Gatten after infection. Gatten stops the expansion of an existing infection.

Refer to the global MRL database for current established tolerances [www.globalmrl.com/db#query](http://www.globalmrl.com/db#query)

**NICHINO**  
AMERICA®