

Unique Mode of Action for Powdery Mildew Control

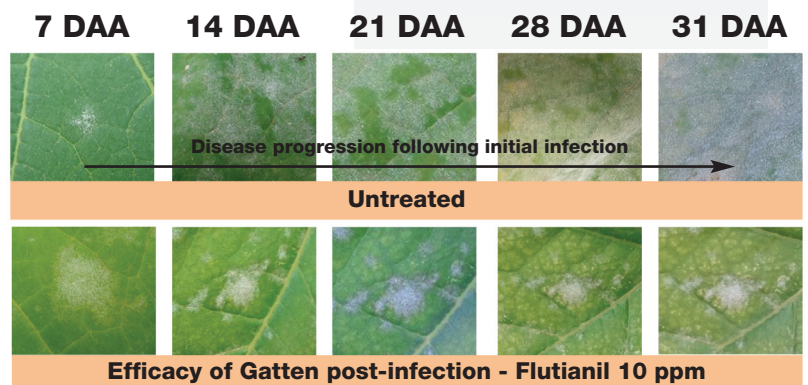
Gatten® fungicide delivers powerful, cost effective powdery mildew control in grapes. The active ingredient in Gatten, *flutianil*, inhibits the powdery mildew pathogen from absorbing nutrients from the host plant, making it impossible for the pathogen to grow and expand. With its unique mode of action, Gatten is an excellent rotational option for resistance management programs in grapes.

Key Benefits

- Unique mode of action for powdery mildew control showing no cross resistance with existing fungicides – FRAC Group U13
- Translaminar movement provides improved overall coverage and disease control
- Inhibits formation of haustorium, the structure that allows the fungus to extract nutrients from the plant cell
- Inhibits formation of the secondary hyphae and limits the development and dispersion of viable spores, helping to break the disease lifecycle
- Demonstrates a high level of efficacy similar or better compared to current standard fungicides
- Excellent rotational partner for powdery mildew control programs

Use Information

- Minimum water volume: 20 gallons per acre
- Recommended application rate: 6.4 fl oz per acre
- Maximum dosage: 25.6 fl oz per acre per year
- Maximum applications: 4 applications per year
- Depending on disease pressure and environmental conditions, make repeat applications at 10 to 14-day intervals
- Do not reapply for a minimum of 7 days
- Reentry Interval (REI): 12 hours
- Preharvest Interval (PHI): 14 days



This diagram illustrates the efficacy of Gatten applied after infection. Gatten stops the expansion of an existing infection.