



New Technology for Broad-Spectrum Pest Control

PECAN

Apta™ SC offers pecan growers an alternative mode of action which provides fast and complete knockdown of all pecan aphids, pecan nut casebearer, and hickory shuckworm.

Key Benefits

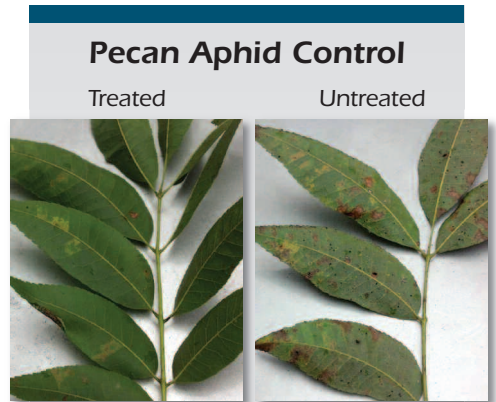
- Fast mode of action
 - instant stop-feeding activity
 - controls pests usually within 24 to 48 hours
 - foliar contact insecticide that inhibits cellular respiration in the insect
- Excellent resistance management tool
 - ideal rotational chemistry or tankmix partner with translaminar and systemic insecticides
 - IRAC Group 21A – Mitochondrial Complex 1 Electron Transport Inhibitors (METI)
- Reduces production of honeydew from aphids and incidence of sooty mold
- Prevents defoliation caused by black pecan aphids

Use Recommendations

- Labeled rates
 - 17 to 27 fl oz: black pecan aphid, yellow pecan aphid, blackmargined aphid
 - 21 to 27 fl oz: pecan nut casebearer and hickory shuckworm
- Apply by ground with a minimum of 50 gallons water per acre

Product Information

- Apta SC is a contact insecticide. Thorough spray coverage is critical to obtain control of the target pest(s).
- Reentry Interval (REI): 12 hours
- Preharvest Interval (PHI): 14 days



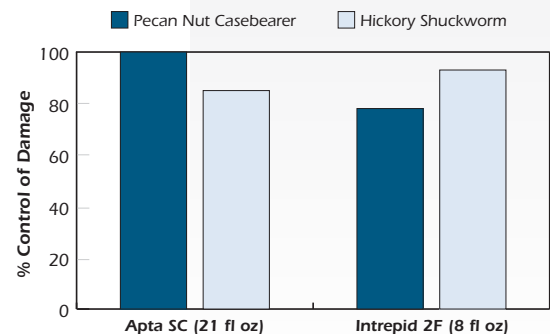
Apta SC for Controlling Pecan Aphids



Untreated season total: 29.6 black pecan aphids, 13.76 blackmargined aphids, 16.26 yellow pecan aphids per leaf
Apta SC included 0.1% MSO

James Dutcher, UGA Tifton, Tifton GA

Apta SC for Controlling Damage Caused by Pecan Nut Casebearer and Hickory Shuckworm



Pecan Nut Casebearer: 100 gpa, untreated damage = 2.4% (low to moderate pressure)
Hickory Shuckworm: 100 gpa, untreated damage = 57% (high pressure)
Apta SC included 0.1% MSO

James Dutcher, UGA Tifton, Tifton GA

